



Article no. **EL250.01** pcs 785,00 Euro

LED-magnifying lamp single arm
with hanger for wall panel
48 premium LED-lights white
power consumption 14W
colour temperature neutral white 4000K
dimnable up to 10% of max. power
scratchproof magnifying glass ø 153 mm / 3,5
dioptr
additional glass ø 30 mm / 8 dioptr
degree of protection IP 20, protection type II
wall plug
3,6 lfm connection line, 100-240V, 50/60Hz
support arm with screw-on adapter
for wall screwing



Article no. **EL250.02** pcs 749,00 Euro

LED-magnifying lamp single arm
for wall screwing
48 premium LED-lights white
power consumption 14W
colour temperature neutral white 4000K
dimnable up to 10% of max. power
scratchproof magnifying glass ø 153 mm / 3,5
dioptr
additional glass ø 30 mm / 8 dioptr
degree of protection IP 20, protection type II
wall plug
3,6 meter connection line, 100-240V, 50/60Hz
support with screw-on adaptor
for wall screwing



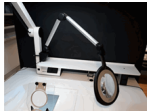
Article no. **EL250.03** pcs 785,00 Euro

LED magnifying lamp 2-arms
with screw flange for mounting on workbench
48 premium LED-lights white
power consumption 14W
colour temperature neutral white 4000K
dimnable up to 10% of max. power
scratchproof magnifying glass ø 153 mm / 3,5
dioptr
additional glass ø 30 mm / 8 dioptr
degree of protection IP 20, protection type II
wall plug
3,6 lfm connection line, 100-240V, 50/60Hz
support with screw-on adaptor



Article no. **EL250.04** pcs 815,00 Euro

LED-magnifying lamp 2-arms
with screwing flange and clip for mounting on
workbench
48 premium LED-lights white
power consumption 14W
colour temperature neutral white 4000K
dimnable up to 10% of max. power
scratchproof magnifying glass e ø 153 mm / 3,5
dioptré
additional glass ø 30 mm / 8 dioptré
degree of protection IP 20, protection type II
wall plug
3,6 lfm connection line, 100-240V,
50/60Hz, support with screw-on adaptor



Article no. **EL250.06** pcs 815,00 Euro

LED-round magnifying lamp 2-arms
with holding device for lamp F1-90/55
48 premium LED white
power consumption 14W
color temperature neutral white 4000K
dimmbable up to 10% of the maximum strenght
scratch-resistant glass magnifyer 153 mm / 3,5
dioptrén
additional magnifyer 30 mm / 8 dioptrén
protection class IP 20, protection class II
electronic wall wart
3,6 meters connection line, 100-240V, 50/60Hz



Article no. **EL250.12** pcs 24,00 Euro

hanger 50 x 30 mm
for LED lamp



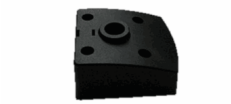
Article no. **EL250.15** pcs 34,00 Euro

clip for workbench, black
for LED-magnifying lamp



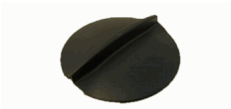
Article no. **EL250.16** pcs 56,00 Euro

adapter for lamp F1-90/55, solid core black
100 x 80 mm for LED-magnifying lamp



Article no. **EL250.17** pcs 18,00 Euro

plinth black for LED round magnifyer lamp



Article no. **EL250.18** pcs 10,00 Euro

cover for magnifyer ø 155 mm, black
for LED round magnifyer lamp