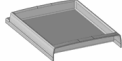
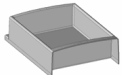
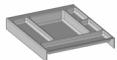
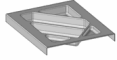
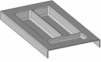
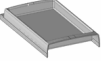
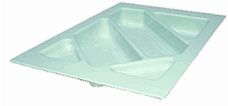
	Article no. TZ532	pcs	49,00	Euro
	plastic insert, for instrument cabinet, 2-4 modules			
	Article no. TZ523	pcs	49,00	Euro
	drawer insert, "laboratory instrument cabinet", grey for cabinet width 334 cm			
	Article no. TZ524	pcs	49,00	Euro
	plastic insert, for instrument cabinet, 2-4 modules			
	Article no. TZ528	pcs	21,80	Euro
	plastic insert, for instrument drawer			
	Article no. TZ529	pcs	21,80	Euro
	plastic insert F40 for tool drawer			
	Article no. TZ530	pcs	21,80	Euro
	plastic insert, for instrument drawer			
	Article no. TZ531	pcs	49,00	Euro
	drawer insert 1 module grey for cabinet width 270 mm			



Article no. **TZ028.01** pcs 22,30 Euro
plastic insert for instrument drawer
(instead of TZ 028)
until November 1994



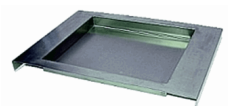
Article no. **KT023** pcs 8,80 Euro
clap for plastic insert, for gold drawer



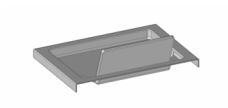
Article no. **TZ025** pcs 27,80 Euro
plastic insert for gold drawer with flap
model until November 1994



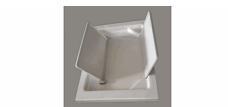
Article no. **TZ026** pcs 18,80 Euro
plastic insert for waste drawer
model until November 1994



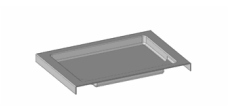
Article no. **TZ501** pcs 258,00 Euro
insert made of stainless steel "U3"
for waste



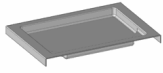
Article no. **TZ525** pcs 31,00 Euro
plastic insert for gold drawer with flap



Article no. **TZ525.02** pcs 55,00 Euro
second flap for gold drawer
for spray fog



Article no. **TZ526** pcs 21,80 Euro
plastic insert for waste drawer



Article no. **TZ526.02** pcs 34,30 Euro

plastic insert for waste drawer
w 480 x h 38 x d 355 mm
with cut-out grip
for CAD/CAM-impliment cabinet/trolley