



FREUDING

For perfect rooms!

PLASTER TRAP

TIPPING
DEVICE

www.freuding.com



Plaster trap

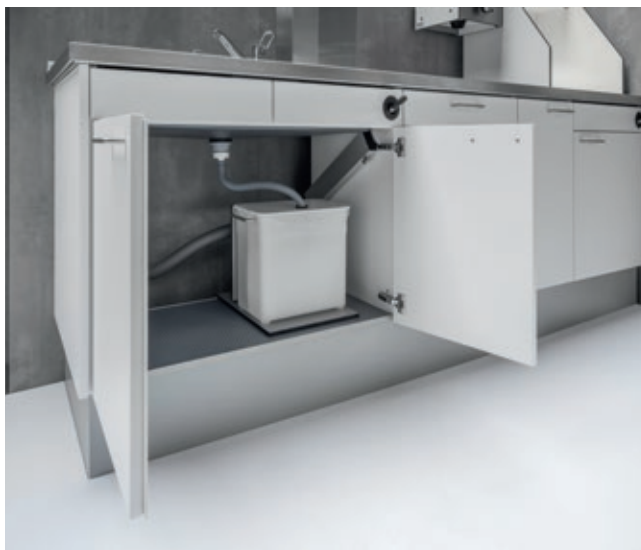
Cleanliness in the plaster room

The all-plastic plaster trap prevents the drain lines from becoming clogged with gypsum sludge, thus preventing sedimentation in the downstream pipes. The four-chamber system with an additional filter extends the retention time of undissolved heavy solids.

The gypsum sludge settles in the settling chamber. The filter reduces and restricts the flow of suspended solids. An odor trap also serves as a wax trap. The transparent container allows for visual inspection of the sludge level.

The central wall with filter serves as the chamber divider and is removable for cleaning. The additional impact basin is suspended in the partition wall. The foil insert minimizes contamination.

Cleaning of the facility



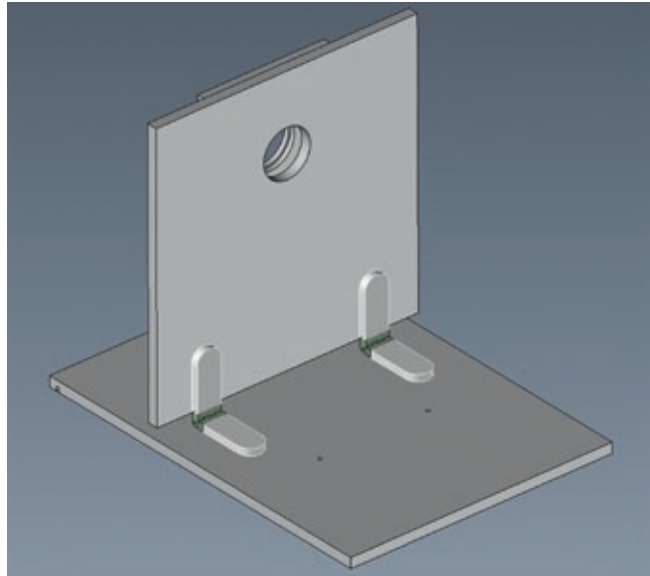
- User-friendly and quick to use
- Empty the water
- Remove the plaster trap
- Reconnect the inlet hose
- Place the plaster trap in the basin
- Remove the partition and odor trap
- Dispose of the plastic bag

Tipping device

Easy and hygienic handling thanks to a tilting device. This is attached to the floor of the existing sink cabinet. This allows the plaster separator to be easily tilted backward, emptying approximately 6 liters of water. By reducing the amount of water, the plaster separator can then be easily removed from the tilting device.

Tipping device for plaster trap system with flexible drain hose DN50/500 mm

Dimensions: W 310 x H 340 x D 420 mm

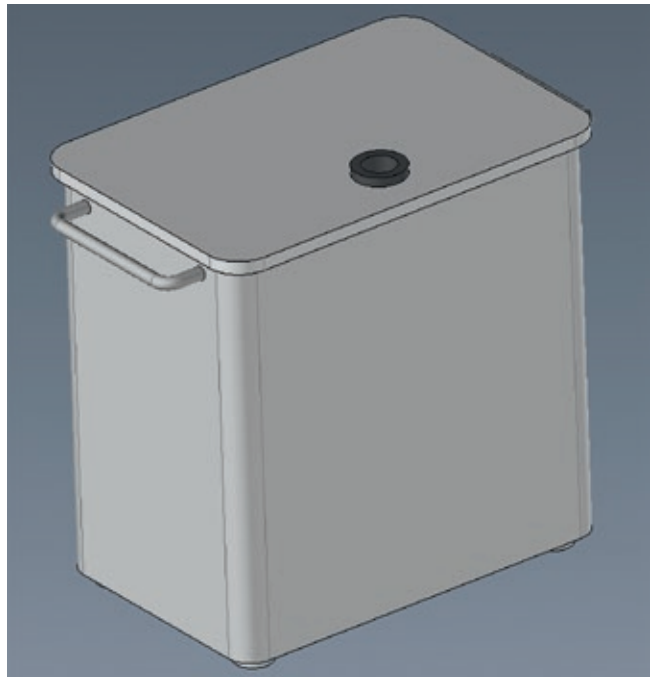


Gypsum separator

The 4-chamber gypsum trap system consists of:

- Plastic container,
- 2 handles,
- divider with filter basin,
- baffle basin,
- lid,
- inlet hose, and
- liner insert

Dimensions: L 380 x H 330 x D 200/260 mm



Item numbers

Gypsum trap system, 4-chamber KT070

4-chamber gypsum trap with tipping device KT071

Replacement foils 25 pieces KT078

Individual parts available on request.

Scan the QR codes and see for yourself how easy it is to use.





FREUDING – FOR PERFECT ROOMS

Freuding Labors GmbH has been manufacturing for over 65 years on an area of over 7.000 m² using state-of-the-art technologies and production facilities. The company employs around 65 people. A 500 m² showroom offers insight into the possibilities for practice and laboratory furnishings. Dedicated field staff and architects accompany your project from planning to completion. Customer proximity is our top priority. Design and quality standards are at the core of our corporate philosophy and have shaped the Freuding brand over the years into what it is today. Freuding is a leading supplier in the dental and medical sectors in Germany, Europe, and internationally. We look forward to your visit to our showroom.



FREUDING

For perfect rooms!



#freudingmoebel



www.freuding.com

Freuding Labors GmbH
Am Schleifwegacker 2
D-87778 Stetten / Allgäu
Germany

Phone +49 82 61 76 76-0
mail@freuding.com